



**Town  
of  
HEBRON, INDIANA**

**2018-2023  
PARKS & RECREATION  
FIVE-YEAR MASTER PLAN**

### **Community Information**

Town of Hebron  
Porter County, Indiana  
P.O. Box 478  
106 E. Sigler Street  
Hebron, IN 46341  
Phone: (219) 996-4641  
Fax: (219) 996-7494

Year Plan Created: 2017

### **Park Board Information**

Becky Joseph  
Park Board President  
PO Box 478  
Hebron, IN 46341  
(219) 996-4641  
Term Expiration: 2017

Pamela Brotko  
PO Box 478  
Hebron, IN 46341  
(219) 996-4641  
Term Expiration: 2018

Linda Brebner  
PO Box 478  
Hebron, IN 46341  
(219) 996-4641  
Term Expiration: 2020

Jami Maslin  
PO Box 478  
Hebron, IN 46341  
(219) 996-4641  
Term Expiration: 2019

### **Paid Staff of the Park Department**

Park Maintenance  
Randy Decker-MCO  
P.O. Box 478  
Hebron, IN 46341  
Phone: (219) 996-4641  
E-mail: [rdecker@mco-us.com](mailto:rdecker@mco-us.com)

## **Definition of Planning Area**

The planning area for the Town of Hebron Parks and Recreation is the Town of Hebron Town limits, plus a four-mile fringe area. The service area for the Town of Hebron Parks and Recreation is the Town of Hebron Town limits, plus a four-mile fringe area. The service area for the Town of Hebron Parks and Recreation does not stop at the Town limits, but includes a fringe area of rural users approximately four miles from the Town center. The Town of Hebron Parks and Recreation is committed to sharing facilities and programs with Town residents and rural users. The financial impact on the Town of Hebron Parks and Recreation rural users has not been studied. That said, there currently are no offsets in place for rural users that are not part of the Town tax base. The Town of Hebron Parks and Recreation welcomes users to enjoy the healthy opportunities the Town of Hebron Parks and Recreation facilities and programs has available!

## **Natural Features and Landscape**

The landscape in the Town of Hebron is mostly flat grassland, including, hilly areas in the northwest section of the Town, with mature Red and White Oaks, Red Maples and Tulip trees.

The geology of the Town of Hebron is moderate clay composition, deep and fertile A and B horizons.

The soils in the Town of Hebron vary from sandy clay loams in the hilly northwest, to silty clay loams in the bottoms near Cobb Creek. The soils in the Town of Hebron do not limit construction or development, but care should be taken when planning construction or development in areas in or near Cobb Creek.

The topography of the Town of Hebron is highest in the southwest quadrant gradually decreasing in elevation almost fifty (50) feet moving in a northern and eastern direction. Major storm water drainage ways, due to this topography, (Dog Lake and Henderson ditches) lie at the eastern and western edges of the Town of Hebron boundary. Cobb Creek travels north and south in the Town and is located east of the Assembly Hall located at 611 N. Main Street. Cobb Creek enters the Kankakee River south of the Town of Hebron. The Kankakee River is approximately one-half mile from the Town limits.

## **Importance of Natural Features and Landscape**

The natural features and landscape, of the Town of Hebron, describe above, are valuable assets for the existing Hebron Parks and Recreation and for the future development of open spaces, public places, lands and structures within the Town of Hebron. The flat grasslands support seven (7) neighborhood parks with play structures for young children, sports complex for organized basketball, tennis and an ice skating rink. The Town of Hebron recreation programs benefit from flat

grassland, especially, the annual Easter Egg Hunt, by allowing all ages to easily hunt for eggs. The hilly area of Town is the optimal site of the Annual Soap Box Derby. The Town water features provide an important opportunity to partner with County and other regional agencies to create an interconnected trail system that could provide a range of recreational possibilities to enhance the community.

### **Man-Made, Historical, and Cultural Features**

Indiana State Road 2 (Main Street) serves the major north-south transportation route in the Town of Hebron. Indiana State Road 2 intersects with Indiana State Road 8 and U.S Highway 231. The State and Federal Highways encourage neighborhood parks as some perceive these highways as barriers to access to some Town of Hebron Parks and Recreation facilities.

The Town of Hebron has two Industrial Parks, commonly known as, Costin (south) and Norbeh (east) Industrial Parks, whom are the location of one of the Town's major employers. The western area of Town that is zoned industrial supports three (3) businesses.

The Valparaiso Municipal Airport, twelve (12) miles northeast of the Town of Hebron is the hub for private planes/pilots for local businesses and charter services.

Passenger rail nor business rail services are available in the Town of Hebron.

The Porter County Interim Survey of Historic Sites and Structures lists (3) 'Outstanding' Historic Structures in the Town of Hebron. These include the McCune Home, Hebron Carnegie Library and John Sigler House. The McCune Home was a way station along the stage coach route between Detroit and St. Louis. Today, the McCune Home is known as the Stage Coach Inn Historical Museum. The Town of Hebron historic Panhandle Railroad Depot was moved and located behind the Stage Coach Inn Historical Museum to preserve the Town's railroad history.

The heart of Hebron downtown business district is at the intersection of State Road 8 and U.S. Highway 231 (commonly known as Main Street). Although the downtown has gone through many changes over the years, it still retains a few late nineteenth and early twentieth century commercial structures.

The four (4) mile fringe area outside of the Town's geographic boundary is predominantly agricultural, with over 75% of the land used for cropland, pastureland, or forest land.

## **Importance of Man-Made, Historical and Cultural Features**

The Man-Made, Historical and Cultural features are the important building blocks of the community that exists today.

The Stage Coach Inn Historical Museum and Panhandle Railroad Depot are extremely important to the history of the Town. The Town of Hebron Parks and Recreation is charged with preserving and communicating this history to park users. Thus, the preservation of these historic structures and their history shape some of the activities of the Hebron Parks and Recreation.

## **Listing of Historical and Cultural Features**

The Hebron Historical Society has provided countless tours and stories to interested persons about the history of Hebron. Along with stories and artifacts from pioneering in the 1800's, they have discussed the use of the railroads in that era. Many visitors from across the United States have traveled to Hebron to visit our Stagecoach Museum and Panhandle Railroad Depot.

The July 4<sup>th</sup> celebration in the Town of Hebron is an annual event that gathers the entire community together. The 4<sup>th</sup> celebration includes a parade, and a firework display sponsored by the Town of Hebron with assistance from the Hebron Chamber of Commerce. Large crowds gather for the Annual Turtle Derby race and the local Veterans of Foreign Wars organization performs a fitting American Flag Raising ceremony accompanied by the Hebron School Band. In addition to the 4<sup>th</sup> celebration, The Town of Hebron holds an annual one-day 'Block' Party in September usually in one of the Town of Hebron Parks. All vendors and organizations are invited to participate regardless of their location. The Town of Hebron sponsors all utility needed for the Party, plus entertainment for the night. The Block Party has high participation and attendance, with visitors from across Northwest Indiana.

These events connect the Town residents and visitors to history and cultural of the community.

## **Why these features be important to your park system?**

All the above described man – made, historical and cultural features help bring visitors to the Town of Hebron and the Town of Hebron parks, as well as shoppers to the local businesses. Holding events showcase our community to residents and non-residents alike about opportunities in the Town of Hebron.

## **Social and Economic Factors**

Total community Population: 3724

Community members' median age: 33.6

Percentage of community living at or below poverty level: 15.5%

Percentage of community under the age of 5: 8.2%

Percentage of community over the age of 65: 10.7%

Percentage of community members over the age of 5 with a disability: 11.8%

Breakdown of community by race:

- % White: 95.9%
- % Black or African American: 1.1%
- % Hispanic or Latino (of any Race): 6.1%
- % American Indian and Alaska Native: 0.02%
- % Asian: 0.4%
- % Native Hawaiian and Other Pacific Islander: 0.0%
- % Some Other Race: 0.09%
- % Two or more Races: 1.6%

Median household income: \$47,880

*([www.census.gov](http://www.census.gov)) (2010 Census) (2011-2015 American Community Survey 5-Year Estimates)*

## **Largest Employers in Community**

Northern Indiana Telephone Company (NITC)

M.S.D. of Boone Township Schools

Patz's Market

Precision Turbo & Engine

*([www.hoosierdata.in.gov](http://www.hoosierdata.in.gov))*

## **Discuss how these social and economic factors in the community affect the provision of parks and recreation**

When comparing the 2000 Census and the 2011-2015 American Community Survey Five (5) Year Estimates, the percentage of the community living at or below poverty level has risen from 4.2% to 15.5% and the median household income increased from \$42,103 to \$47,880 resulting in an increase 11.3% and \$5,777, respectively. These are important factors when decisions are made regarding fees for Park Board sponsored events or activities. Most of the events and activities are free of charge affording all residents the opportunity to participate regardless of income. If a fee must be charged, the Park Board's policy is to keep the cost as low as economically feasible to make the activity affordable to as many people as possible. Volunteer support is paramount in the Park Board's cost containment strategies.

Other options for funding existing and new facilities and equipment to modernize the Town of Hebron Parks include, but not limited to, creation of a Park Foundation,

issuing bonds and or adjusting the fees and /or tax rate funding Hebron Parks and Recreation. The social and economic factors of the community suggest the Town of Hebron has the probable ability to repay bonds, support the creation of a Park Foundation and adjust tax rates and/or fees to support initiatives.

### **Park Department Information and Facility Inventory**

#### Alyea Memorial Park

- S. Adams & W. Church Street
- Approx. 1.3 acres
- Playground, tennis court, basketball court, bleacher, bike rack, pavilion, gazebo
- Parking lot

#### Buchanan Park

- Beverly & Birch Drive
- Approx. .34 acre
- Playground, grill, bike rack

#### Cohen Park

- E. Bates & N. Ben Butler Street
- Approx. .92 acre
- Playground, bike rack, gazebo, basketball court, bleacher

#### McMillen Park

- Fir Ct. (west side)
- Approx. .8 acre
- Playground, basketball court, bleachers, bike rack, grill(s), pavilion

#### Wielgus Memorial Park

- End of South St. (cul-de-sac)
- Approx. .33 acre
- Playground, bike rack

#### Novreske Memorial Park

- 509 W. Church St.
- Approx. .3 acre
- Playground, bike rack

#### Community Center Park (Assembly Hall)

- 611 N. Main Street
- Approx. 7.45 acres
- Playground, walking track, pavilion
- Parking lot

#### Stagecoach Inn Museum

- 127 N. Main Street
- Approx. .09 acre
- Built in 1849 by Mr. McCune
- Museum includes historical artifacts of the area and past residents
- Originally used as a way station along the stagecoach route between Detroit and St. Louis. In 1863, the Inn continued as a resting place for railroad travelers and hunters/fisherman along the Kankakee River.

#### Panhandle Railroad Depot

- Behind Stagecoach Museum (behind 127 N. Main St.)
- Approx. .12 acre
- Museum includes mainly railroad historical artifacts along with artifacts of the area

*(<http://portico.mygisonline.com/html5/?viewer=porterin.bv1-p1>)*

#### **List the approximate yearly total budget by year for your department for the past several years:**

- 2017-\$9,000
- 2016-\$8,500
- 2015-\$8,500

The Town of Hebron General Fund is the source of funding for the Town of Hebron Parks and annual budget.

The annual park budget for the last three years has generally remained unchanged. The three categories for annual Hebron Parks and Recreation expenses are: Programming, Maintenance and Capital Projects. The Town of Hebron Park Board has successfully increased the number of park programs and replaced park equipment in recent years by implementing innovative cost-efficient improvements. For example, the Park Board ordered park benches through a plastic bottle cap collection program held the last two years. A company located in Indiana manufactured park benches from recycled plastic bottle caps at a reduced cost to the Town. Another example, is the number of park programs held each year increased by connecting with the community for sponsorship of the programs.

#### **Short list of other sources of recreation lands or facilities in or around the Town of Hebron**

The closest neighboring community is Boone Grove, Indiana which is six (6) miles northeast of Hebron. Boone Grove is an unincorporated rural community in Porter County. Most of the Boone Grove community attends Porter Township School System. An elementary and middle school are two (2) of the school's facilities in



## **Other sources of recreation lands or facilities in or around the Town of Hebron**

- ❖ MSD of Boone Township Schools
  - Playground
  - Baseball and Softball field
  - Track
- ❖ Lake County Stoney Run County Park
  - Trails
  - Pavilions
  - Playground
  - Fishing
- ❖ Valparaiso, Indiana
  - Valplayso
  - YMCA
  - Boys and Girls Club
- ❖ Demotte, Indiana
  - Demotte Public Pool

([en.wikipedia.org/wiki/Boone\\_Grove,\\_Indiana](http://en.wikipedia.org/wiki/Boone_Grove,_Indiana)) ([www.ptsc.k12.in.us/](http://www.ptsc.k12.in.us/))  
(<https://www.facebook.com/pages/Demotte-Public-Pool/123558494368974>)  
(<https://www.ci.valparaiso.in.us/649/Valplayso>)  
([http://www.lakecountyparks.com/parks/stoney\\_run.html](http://www.lakecountyparks.com/parks/stoney_run.html))

### **Accessibility and Universal Design**

#### **Town of Hebron Parks and Recreation programs and facilities that are currently accessible:**

- Entrance to all parks/no barriers present
- Entrance to all basketball courts/no barriers present
- Community Center Park (Assembly Hall) restrooms
- Accessible parking available at Alyea Park and Community Center Park (Assembly Hall)
- Walking trail at Community Center Park (Assembly Hall)
- Park programs at Community Center Park (Assembly Hall)

#### **The Town of Hebron Parks and Recreation program and facilities that are currently NOT accessible:**

- All playground structures: swings, see saws, slides, merry-go rounds, and climbing facilities.
- All park benches and picnic tables

- All basketball courts
- All bleachers
- All pavilions
- All gazebos
- All grills

**Methods the Town of Hebron Park Board uses to notify the public about ADA’s nondiscriminatory requirements, and accessible facilities programs and services in the Town of Hebron park system:**

Town of Hebron Parks and Recreation ADA policy: Persons with disabilities or non-English speaking person that need assistance may contact the Hebron Town Hall in person at 106 E. Sigler Street or call (219) 996-4641, ask for the Treasurer, at least 72 business day hours prior to the meeting or event for assistance to participate in the meeting or event.

- Policy posted on the official Town of Hebron Website
- Policy posted on the official Facebook pages: “Hebron, Indiana” and “Hebron Indiana Parks”
- Policy printed on meeting notices, event brochures/flyers
- Policy announced at public meetings

**Public contact for the Town of Hebron Parks and Recreation meetings and events if they had a question, comment, or issue with accessibility of the Hebron park system, programs, or activities:**

Name/Job Title: Alan Kirkpatrick, Clerk-Treasurer  
 Address: 106 E. Sigler Street, Hebron, Indiana  
 Phone number: (219) 996-4641 Email: treasurer@hebronindiana.org

A hard copy with original signatures of the ABA/ADA/Rehabilitation Act of 1973 Section 504 Accessibility Compliance Form should be sent in to the DNR-Outdoor Recreation Local Master Planner when this plan is finalized: Has the Form been signed, dated, and a hard copy sent in to DNR-OR? Pending  
 (Circle one answer) YES / NO

**Public Participation**

**When you document your public input effort in this plan, you must include the following information even if the methods are not successful:**

- Types of methods used (questionnaire, public meetings, etc.)
- Date(s) and location(s) of the survey, meeting or interviews
- Number of surveys sent
- Number of surveys returned

- **Number of people/groups interviewed**
- **Number of members of the public attending public meetings (public meetings should NOT count members of the park board, government officials, consultants, or their families toward their total attendance figures)**
- **A synopsis of the comments gathered from each method**
- **Summary of all the input**

**Public meeting information**

**Date and time of public hearing:**

November 9, 2017 7 P.M. CDT (Local Time)

**Where was the meeting held?**

Community Center Park (Assembly Hall) 611 N. Main Street, Hebron, IN

**Public hearing advertised using the following:**

- Notification on the Hebron monthly utility bill
- Legal notice published ten (10) days prior to the public hearing
- Fliers in library, businesses, etc.
- Town of Hebron official website
- Town of Hebron and Park Board official Facebook page
- Advertisement in Newspaper

**How many members of the actual public showed up? [This does not count park board members, local government officials, park employees, or consultants]**

TBD

**Create a short list of the comments and issues discussed by the public at the meeting: (2-3 paragraphs or a bulleted list)**

TBD

**Survey/group/individual Information:**

**What kind of survey or interview method did you choose, and why? (What date and time was the survey or interviews held?)**

The Hebron Park Board selected a multiple-choice survey random public input method. 500 copies of the survey were distributed within the community. The survey was posted on Survey Monkey. Special invitations were made to high school students to participate in the survey. Youth outreach efforts included a special survey for elementary school students. Surveys were accepted from

August 1, 2017 through September 22, 2017. The multiple-choice survey format was chosen for versatility, ease of use and gathering of clean data that is easy to analyze. This survey format provides a fixed list of answer options yielding structured survey responses and ease of or respondents to complete in a limited amount of time.

Stakeholder interviews were conducted as the non-random public input method. The approximately 14 stakeholder interviews were held on August 28, 2017 at the Assembly Hall, 611 N. Main Street, Hebron, IN. The Park Board chose to use stakeholder's interviews to ensure a diverse collection of opinions connecting with specific sectors of the community.

**Surveys were advertised and distributes as follows:**

- Inserted into approximately 1350 Hebron monthly utility bills
- Fliers and surveys were available in the library, businesses, etc.
- Distributed to local organizations
- Town of Hebron official website invite
- Town of Hebron and Park Board official Facebook page invite
- Direct invitations (Stakeholders)

**Interviewees were selected by the Town of Hebron Park Board as follows:**

The Park Board chose at least one person from all peer groups for the stakeholder interviews. This strategy allowed for a broad spectrum of point of views. Peer groups included elected officials, school staff, coaches of local sport teams, parents, business owners and members of organizations such as the Lions Club.

**How many members of the actual public were invited to the interviews or responded to your survey?**

- Four hundred five (405) surveys were collected
- Twenty (20) stakeholders were invited to participate in an interview

**Create a short list of the comments and issues discussed in the surveys and stakeholder interviews:**

- Walking/Jogging trail
- Splash pad
- Updating equipment
- Additional playgrounds for children 12 years and under
- Additional picnic areas
- Dog park
- Additional basketball courts
- Baseball/softball courts
- Cleanliness of parks
- Vandalism of parks

**Needs Analysis**

**Town of Hebron total acres of local parks and recreation land is: 11.65 Acres**

**Town of Hebron total population by the most recent US Census is: 3724 people**

**The top five most common needs or desires expressed by the public during your public participation methods are: TBD**

**The top five most common needs or desires as listed by the Town of Hebron Park Board are:**

- Splash pad
- Community Center opened and operated by the Park Board
- Replace equipment at McMillan Park
- Revamp Alyea Park
- Picnic pavilion at Novreske Park.

**If your community could list just one large “dream” amenity or facility (regardless of cost) to create in the next ten years, what would it be?**

**“Dream project’s name and possible location**

**Rough guess cost estimate for the “dream” project**

- Re-inventing Community Center Park (Assembly Hall) to include ADA compliant amphitheater, pavilions, splash pad, restrooms, trails.....creating a one central park in the heart of the Town of Hebron.

**Map showing location of the Town of Hebron Parks**

See attached Town of Hebron Park Location Map labeled Exhibit A.

**Priorities and Action Plan Schedule**

Using both your public input and park board top five lists of expressed parks and recreation needs, combine the two lists to create a single top priority list (maximum of ten priorities) of action items, and list them in rough priority order below (#1 being the highest priority, down to #10 being the lowest priority):

- 1.
- 2.
- 3.
- 4.
- 5.
- 6.
- 7.
- 8.
- 9.
- 10.

**TBD**

Once you have written your priority list, use it to fill in the empty table below to create your action plan schedule; spread the Priority List items out over the next five years so that your most expensive projects don't all happen at once:

DRAFT

Year	Site of work	Action taken	Cost Estimate	Potential Source of Funds

**TBD**

DRAFT

### **Final Public Presentation of the Plan**

After the plan has been finished up to this point, it's time to have the public verify that they agree with all the previous public input and the resulting action plan. To do this, simply set aside time during the next regularly scheduled park board meeting for public comment, and invite the same participants from your earlier public input methods to return, listen to the final results of the plan, and provide their final comments.

- **Time and Date of final public presentation of the plan**
- **Location**
- **Number of Members of the public in attendance**
  
- December 14, 2017 at 7p.m. Local Time (CDT)
- Hebron Assembly Hall, 611 N. Main Street, Hebron, Indiana
- Number of members of the public in attendance: TBD

**Discuss/List the primary comments made by the public during the meeting here: (1-2 paragraphs or a bulleted list)**

TBD

### **FINAL PAPERWORK:**

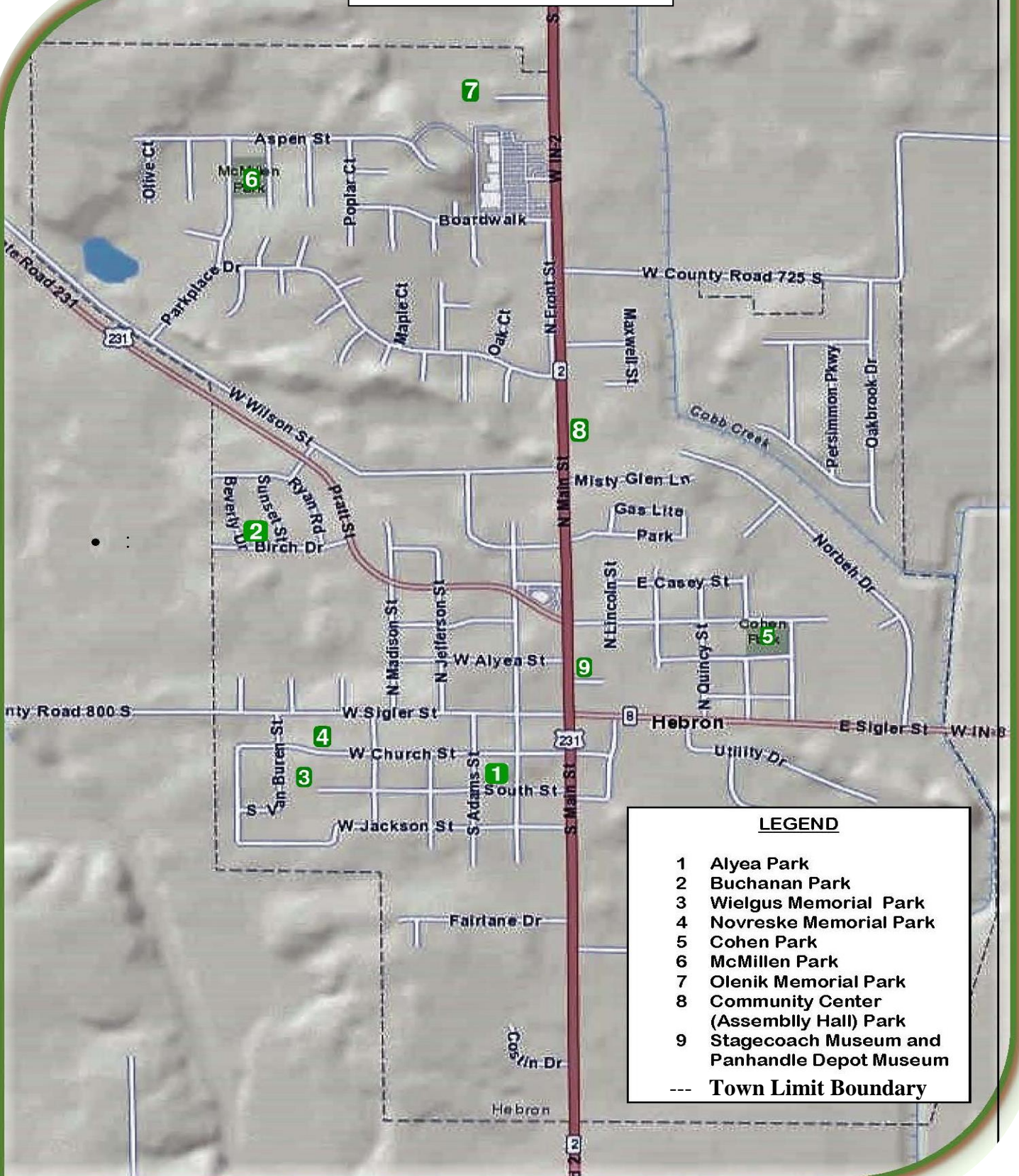
A hard copy with original signatures of the park board resolution adopting the plan should be sent in to the DNR-Outdoor Recreation (DNR-OR) Local Master Planner when this plan is finalized: Has the Form been signed, dated, and a hard copy sent in to DNR-OR? (Circle one answer) YES / NO An example of the form is in the appendices of the "IDNR Planning Guidelines for Five Year Parks and Recreation Master Plans" available for free download online at: <http://www.in.gov/dnr/outdoor/2603.htm>

(SEE END OF PLAN FOR RESOLUTION)

**END of PLAN TEMPLATE (see INSTRUCTIONS for submission info)**



EXHIBIT A



- LEGEND**
- 1 Alyea Park
  - 2 Buchanan Park
  - 3 Wielgus Memorial Park
  - 4 Novreske Memorial Park
  - 5 Cohen Park
  - 6 McMillen Park
  - 7 Olenik Memorial Park
  - 8 Community Center (Assembly Hall) Park
  - 9 Stagecoach Museum and Panhandle Depot Museum
  - Town Limit Boundary

**ASSURANCE OF ACCESSIBILITY COMPLIANCE WITH:  
ARCHITECTURAL BARRIERS ACT of 1968 (As Amended);  
SECTION 504 OF THE REHABILITATIONACT OF 1973 (As  
Amended); AND TITLE II OF THE AMERICANS WITH  
DISABILITIES ACT OF 1990 (As Amended)**

The \_\_\_\_\_ (Applicant) has read the guidelines for compliance with the Architectural Barriers Act of 1968 (As Amended); Section 504 of the Rehabilitation Act of 1973 (As Amended); and Title II of the Americans with Disabilities Act of 1990 (As Amended) and will comply with the applicable requirements of these Acts.

SIGNATURE \_\_\_\_\_  
APPLICANT PRESIDENT

\_\_\_\_\_  
(President's printed name)

SIGNATURE \_\_\_\_\_  
APPLICANT SECRETARY

\_\_\_\_\_  
(Secretary's printed name)

DATE \_\_\_\_\_

RESOLUTION NO. \_\_\_\_\_

A RESOLUTION TO ADOPT THE  
PARK AND RECREATION  
FIVE (5) YEAR MASTER PLAN

WHEREAS, the Hebron Park and Recreation Board is aware of the parks and recreation needs of the residents of the Town of Hebron, Indiana; and,

WHEREAS, the Hebron Park and Recreation Board realizes the importance of sound planning to meet the needs of its citizens.

NOW, THEREFORE, BE IT RESOLVED, that the Hebron Park and Recreation Board, by unanimous declaration, does adopt the Park and Recreation Master Plan as its official plan for the next five years, for the growth and development of the parks and recreational opportunities in the Town of Hebron, Porter County, Indiana.

Passed and signed this \_\_\_\_ day of \_\_\_\_\_, 20\_\_\_\_.

\_\_\_\_\_  
Becky Joseph, Park Board President

ATTEST: \_\_\_\_\_  
Town Attorney